

PCBA Cleaning Machine I.C.T-5600



Introduction:

I.C.T-5600 is an off-line, compact, energy-saving and environmental protection, batch cleaning, high-end PCBA cleaning machine. I.C.T-5600 can automatically complete the cleaning, rinsing, drying process in the clean chamber by just push one start key.

I.C.T-5600 PCBA cleaning machine can effectively clean the residuals on SMT / THT welding PCBA, such as: rosin flux, water-soluble flux, non-clean flux, solder paste and other organic and inorganic contaminations.

Mainly used in aviation, aerospace, medical, new energy, automotive electronics, meters industries, especially suitable for small amount, multiple types PCBA cleaning.

Features:

1. Through clean rosin flux, water-soluble flux, non-clean flux, solder paste and other organic and inorganic contaminations.
2. 2-layers cleaning basket: 610mm(L) x 560mm(W) x 100mm(H) x 2 layers.
3. State of the process is visible through a large observation window.
4. Clean detergent heat system heat cleaning detergent to a certain temp, raise cleaning efficiency and reduce clean time.
5. Easy operation interface, quick setting clean parameters. Different passwords can be set.
6. Inner filter makes detergent used repeated. Real-time measure DI water resistivity and monitoring cleaning effect. Resistivity range is 0~18 MΩ.
7. The remaining detergent in the pump and pipes are blown off by compressed air and flow back to cleaning tank. This function saves detergent up to 50%.
8. High standard cleanliness, ionic contamination completely meets the requirement of IIPC-610D I class.
9. Totally SUS304 structure, very firm and attractive.

Material:



Visible, lighting



Large space: 640*560*520mm, 2 layers
Cleaning room (Stainless steel 304)



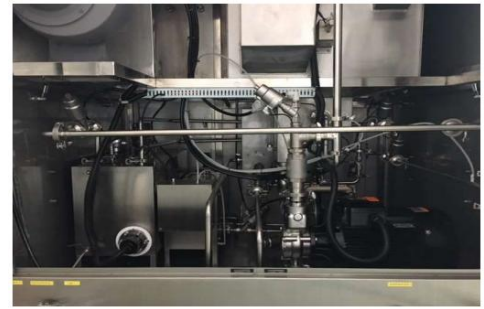
Auto move



Control Box
Mitsubishi,Schneider,CKD,Omron

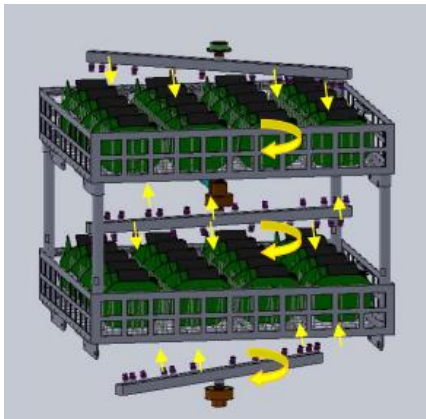


Industrial Pure Water Machine
Made by I.C.T

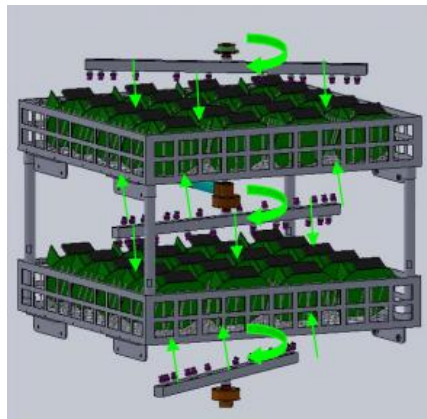


Pipe and Valve
Stainless steel304

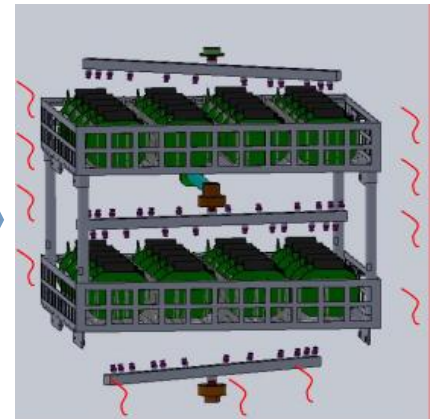
Cleaning process:



Cleaning

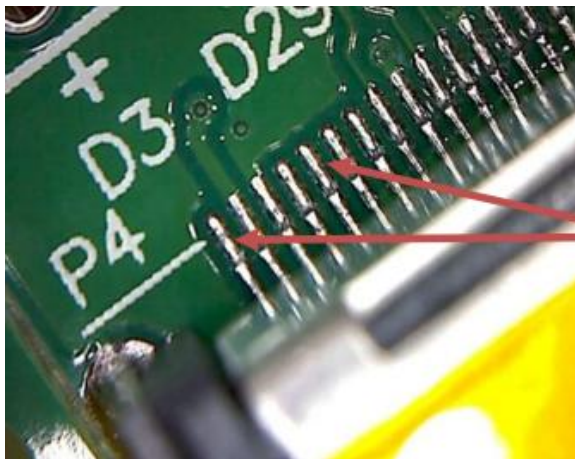


Rinsing

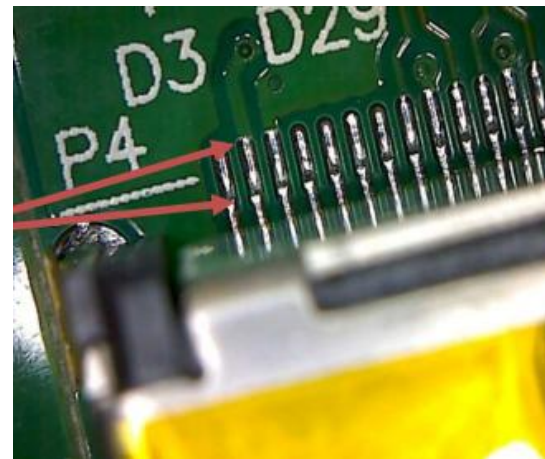


Drying

Effect:



Before cleaning



After cleaning

Cleaning Report:

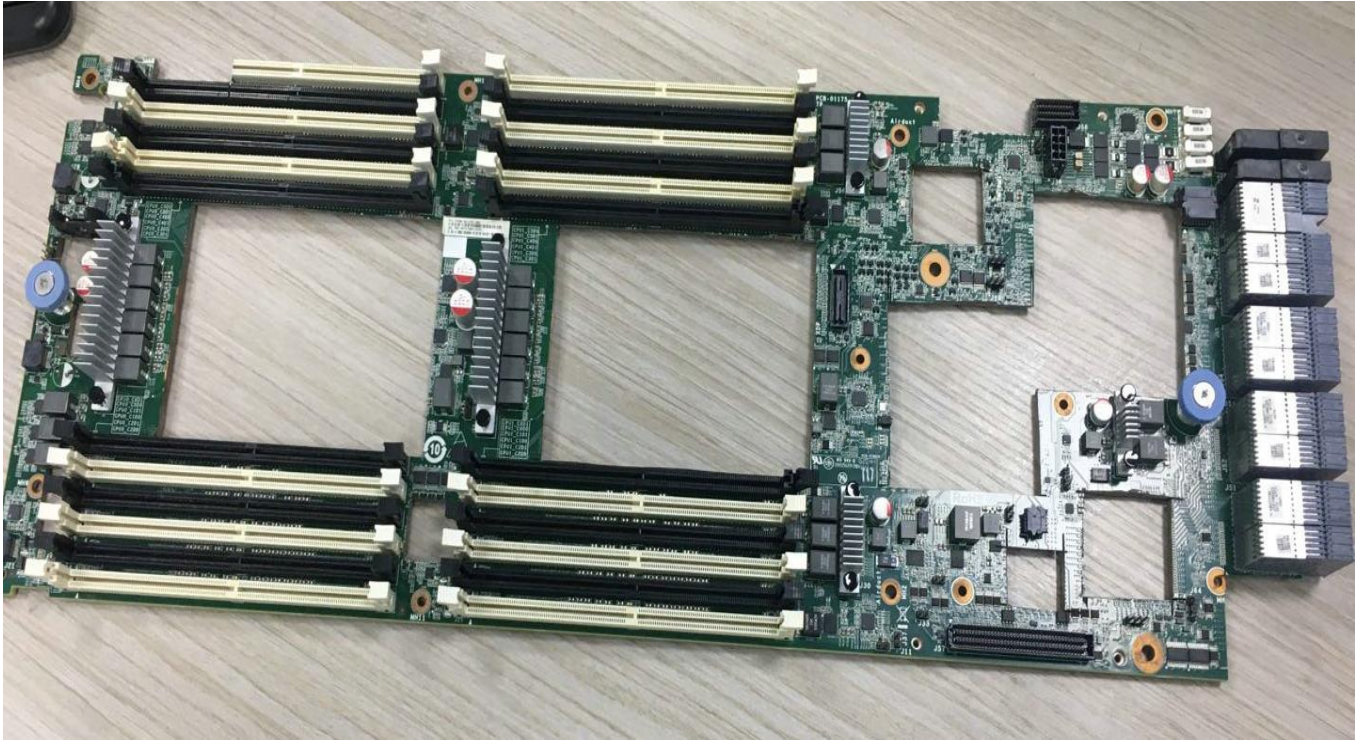
1.Customer:MiTAC Computer CORP.



2.Cleaning and Inspection Tool: cleaner,DI water machine,Kyzen 462B Cleaning liquid,phone,200 times electronic magnifier

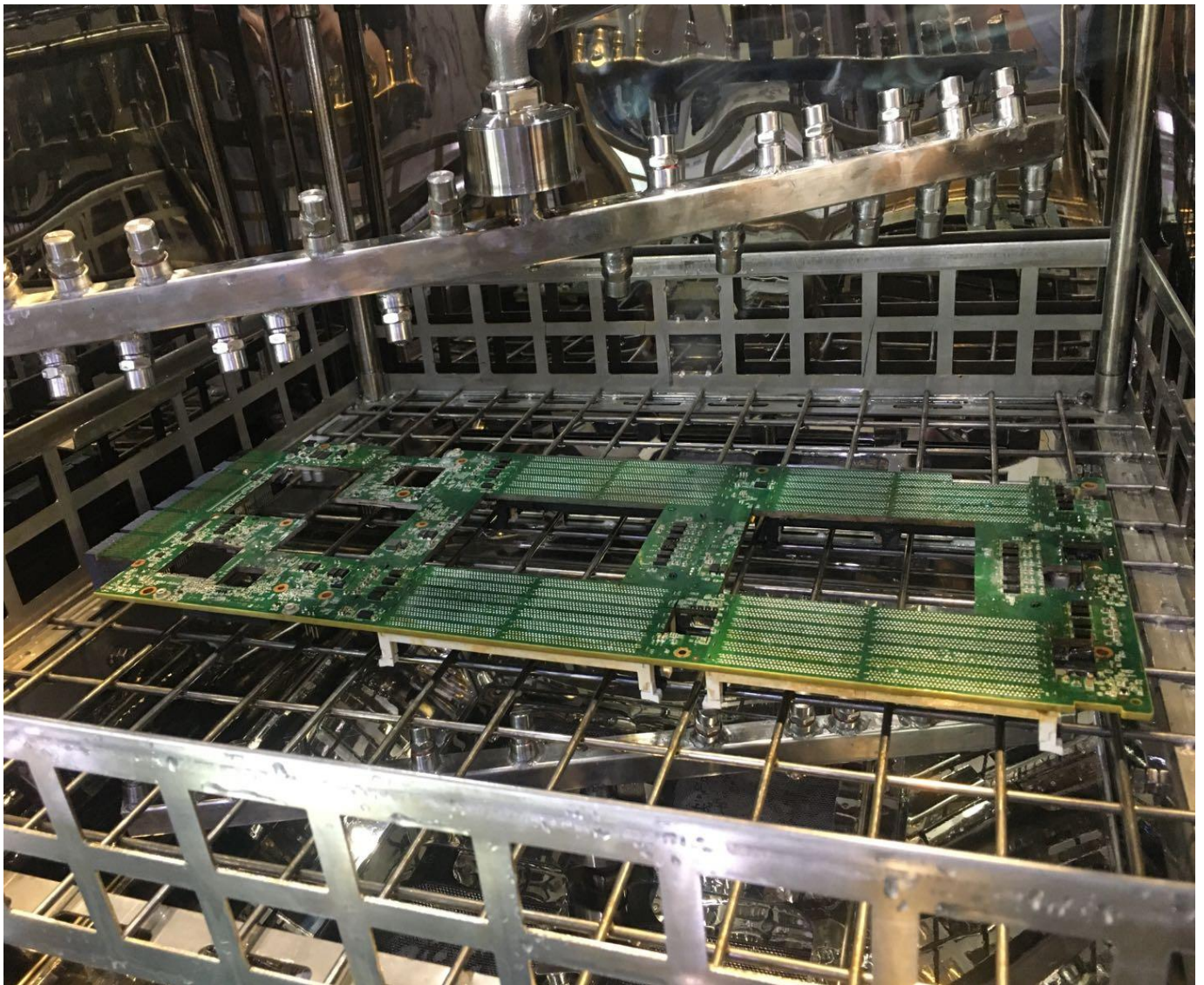


3.Cleaning sample:main board(A B side)



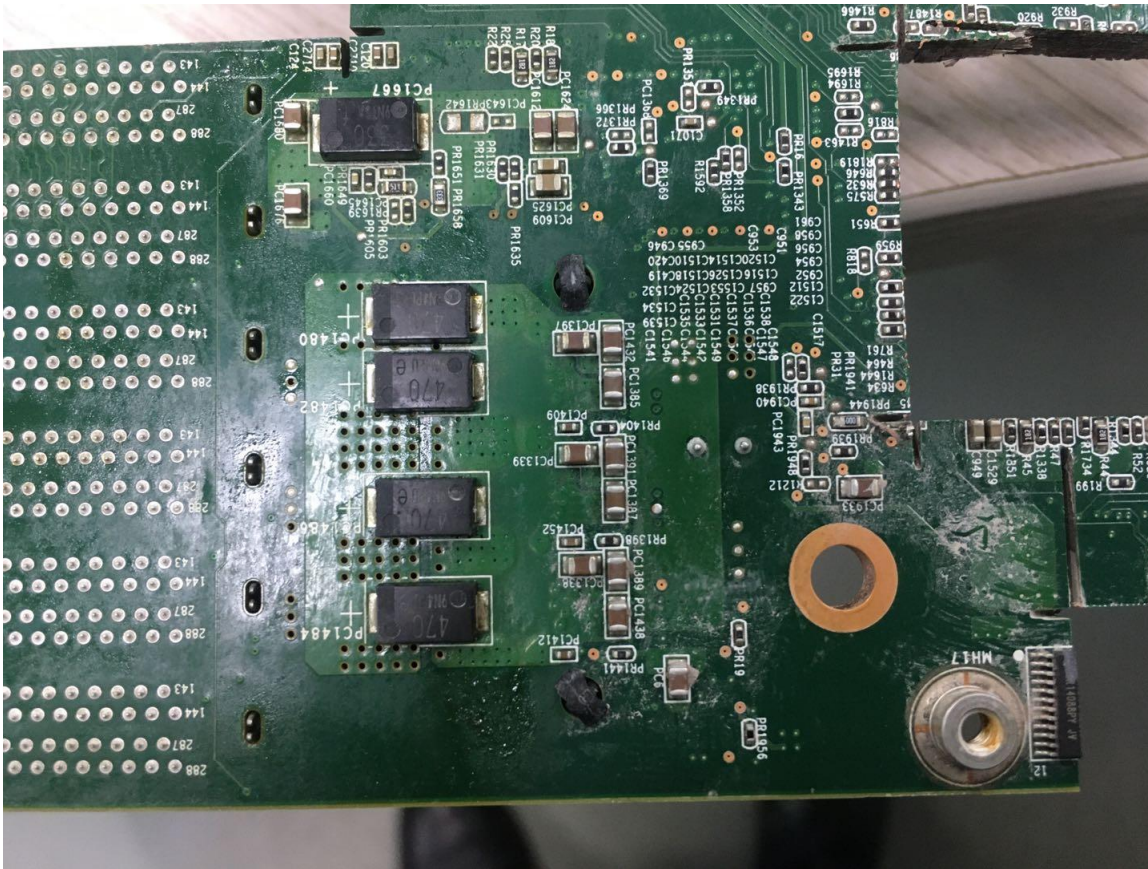
3. Condition setting:

Machine	I.C.T-5600
Cleaning liquid	Kyzen 462B
Clean time	8min
Rinse times	3times
Rinse time	2min/times
Dry time	15min
Cleaning fluid concentration	25%
Cleaning fluid temperature	60°C
DI Water resistivity	6MΩ
Dry temperature	80°C



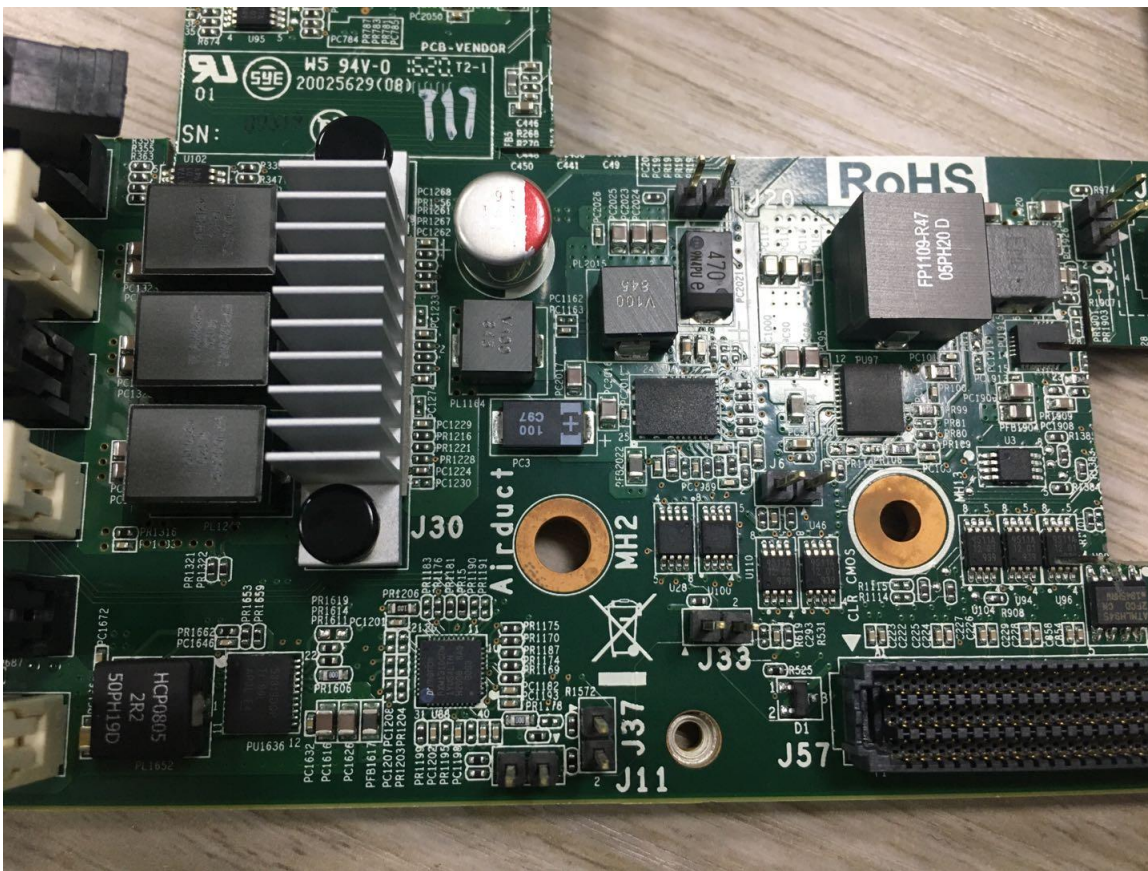
4. Effect comparison:

Comparison of 9 cleaning methods for different parts and different areas

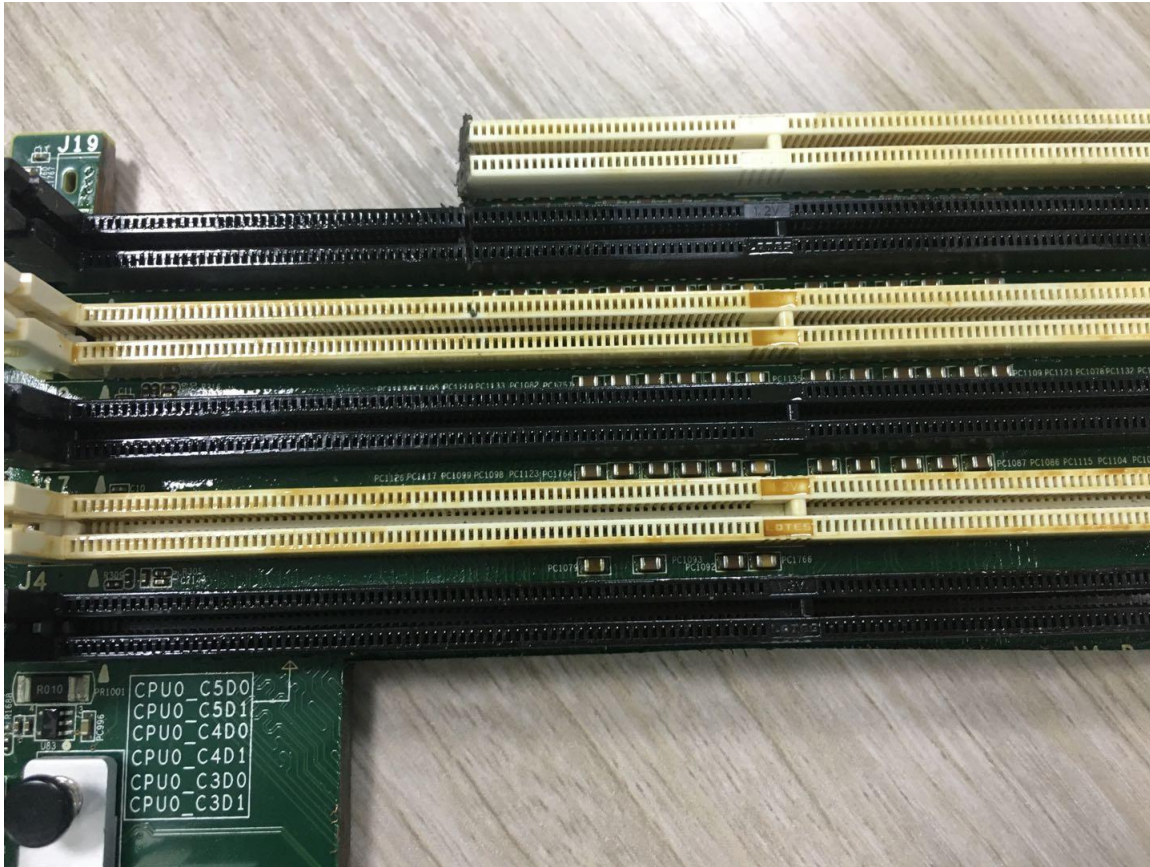


Comparison 1

Before cleaning



After cleaning

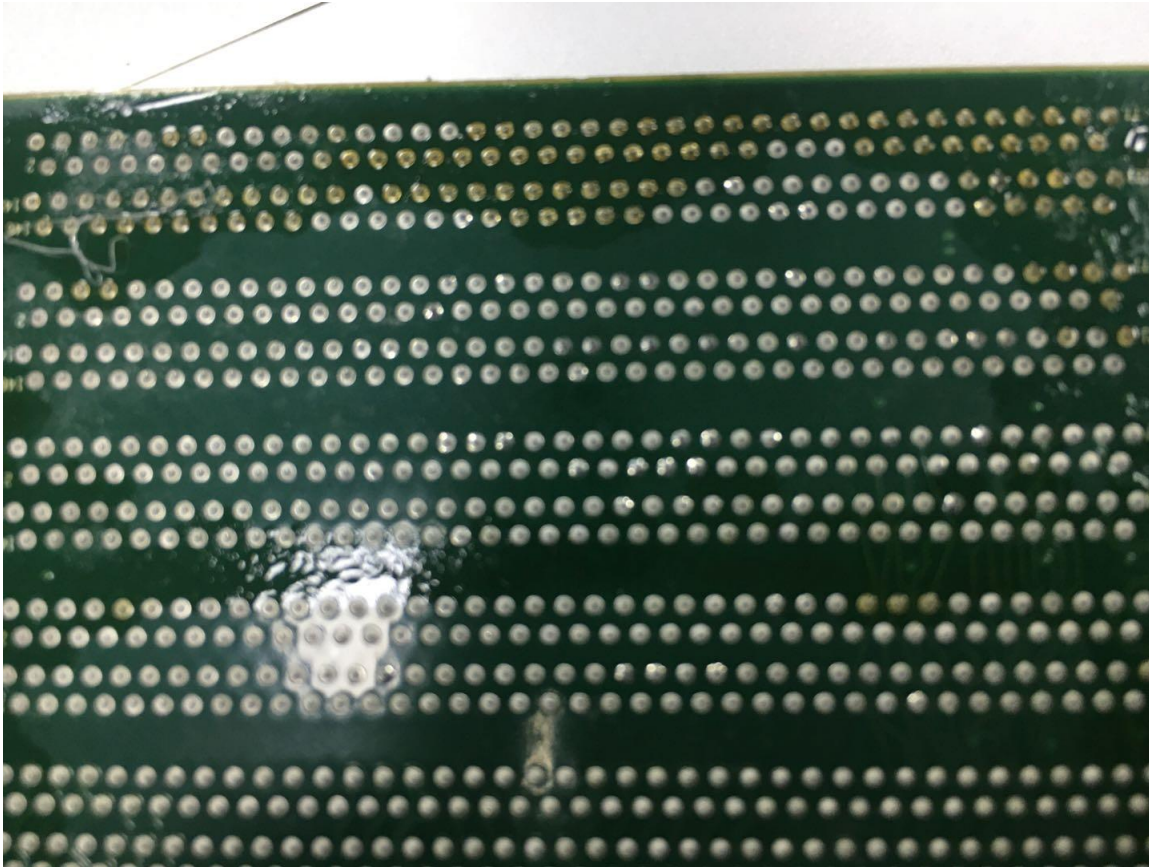


Comparison 2

Before cleaning

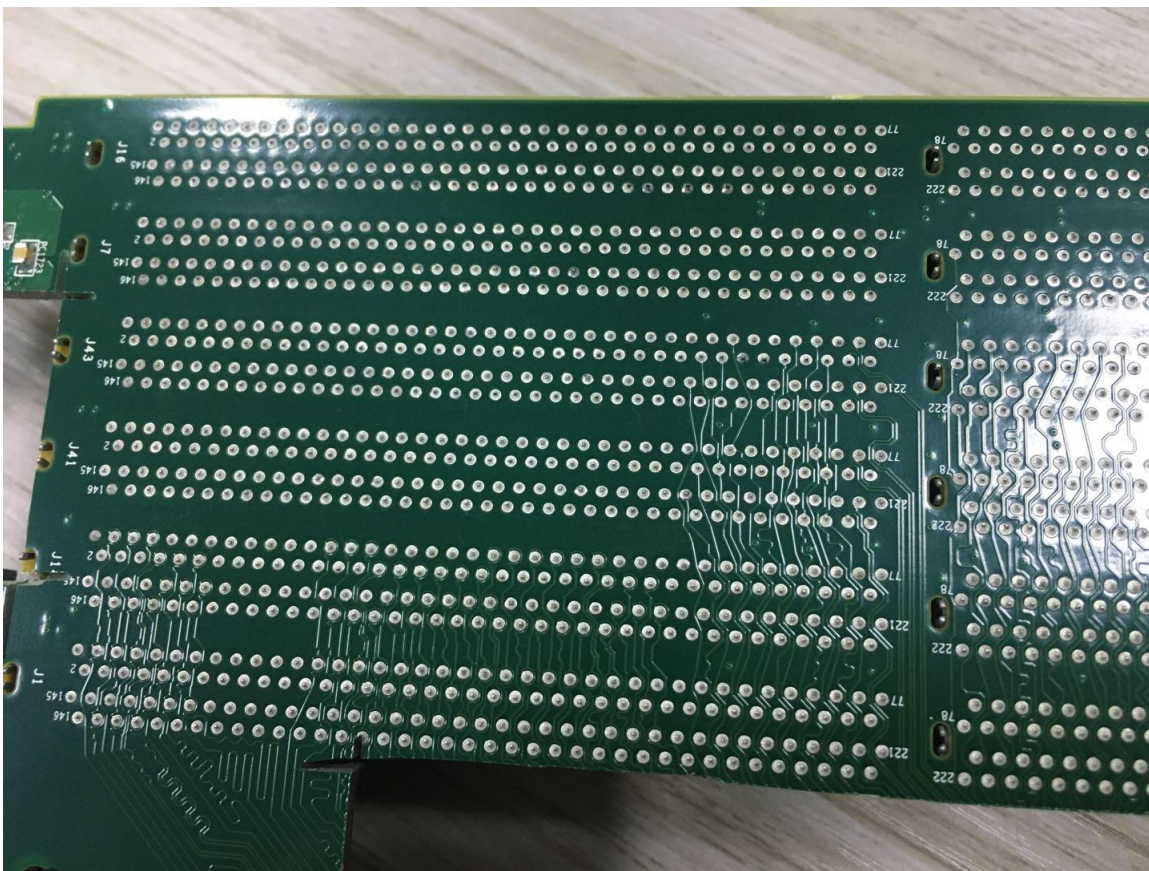


After cleaning



Comparison 3

Before cleaning

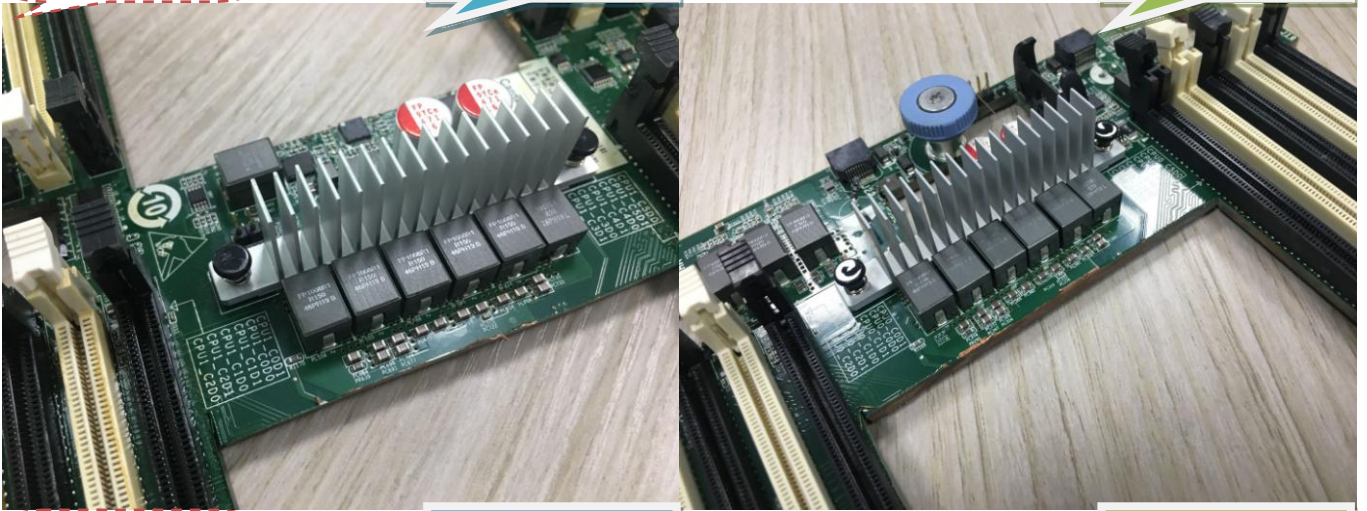


After cleaning

Comparison 4

Before cleaning

After cleaning



Comparison 5

Before cleaning

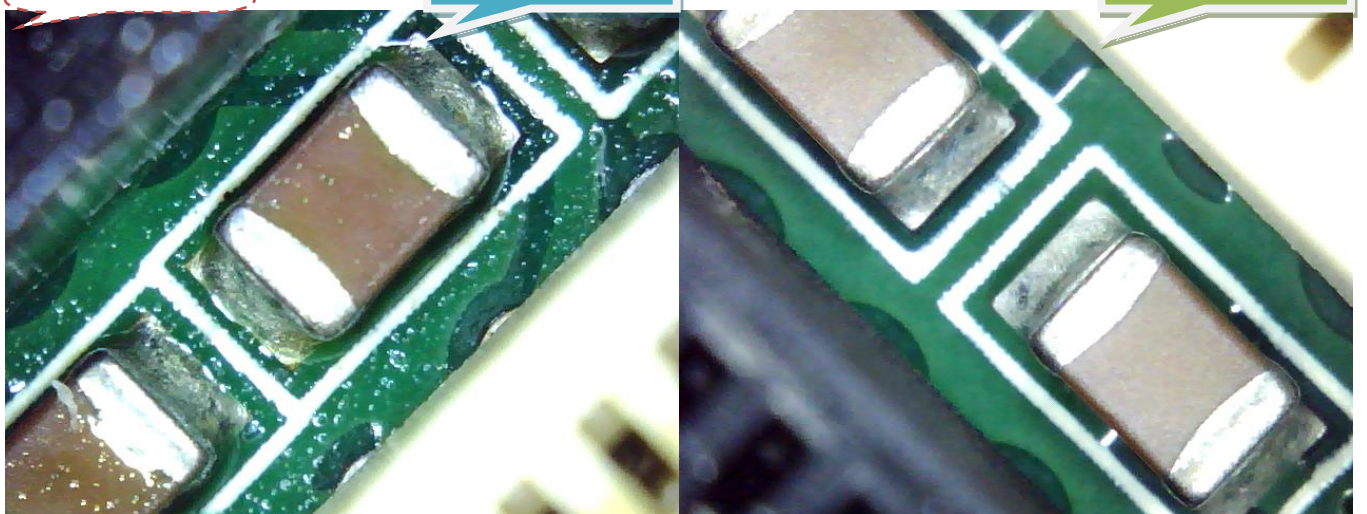
After cleaning



Comparison 6

Before cleaning

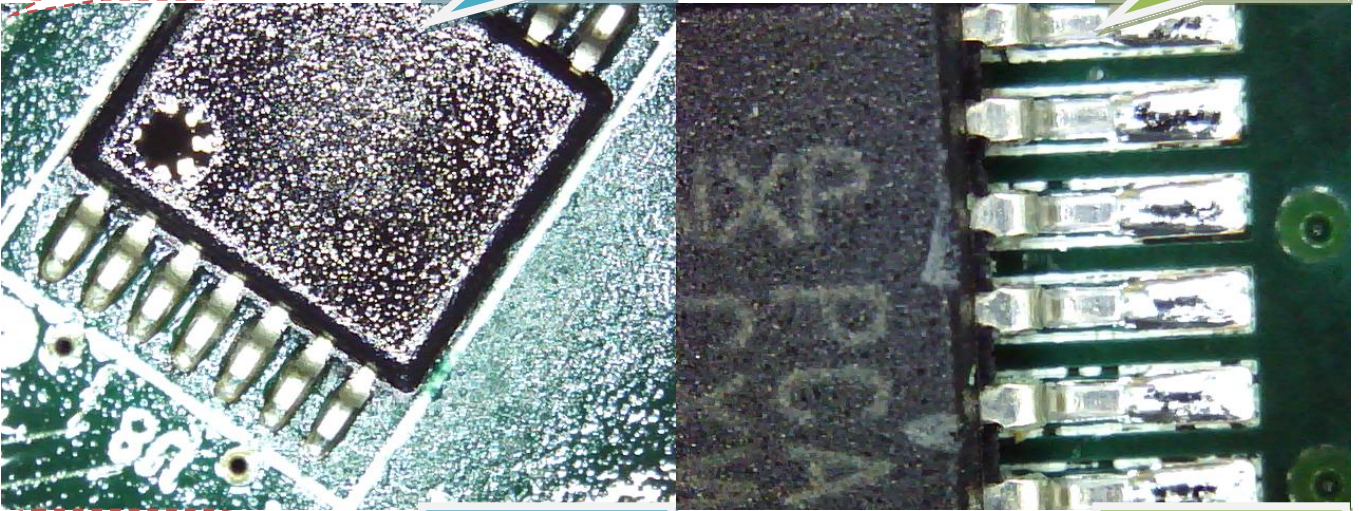
After cleaning



Comparison 7

Before cleaning

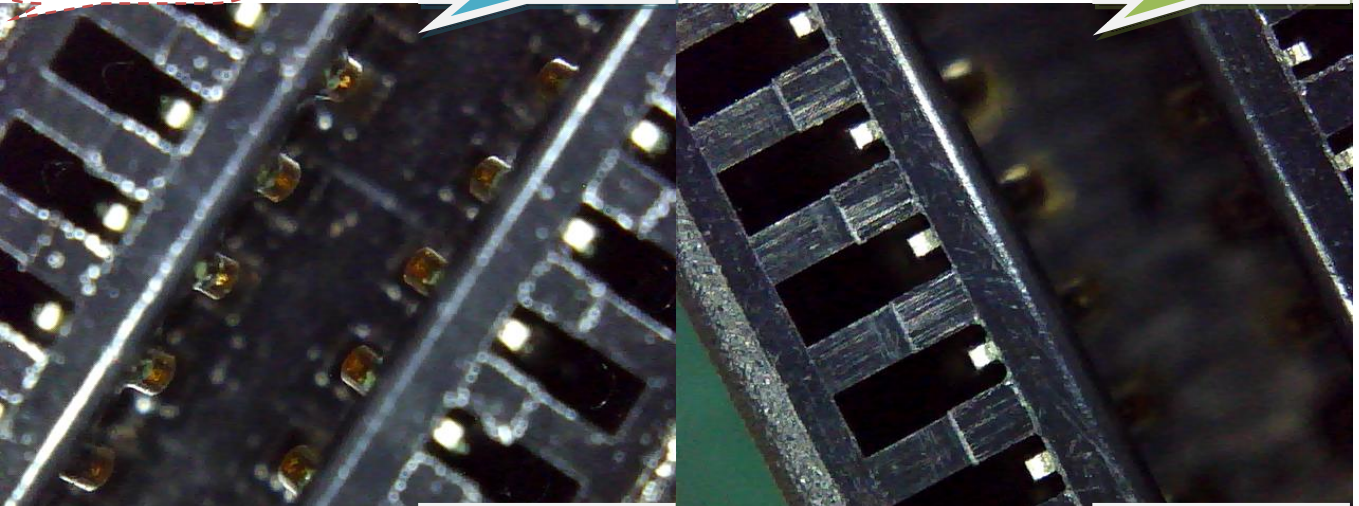
After cleaning



Comparison 8

Before cleaning

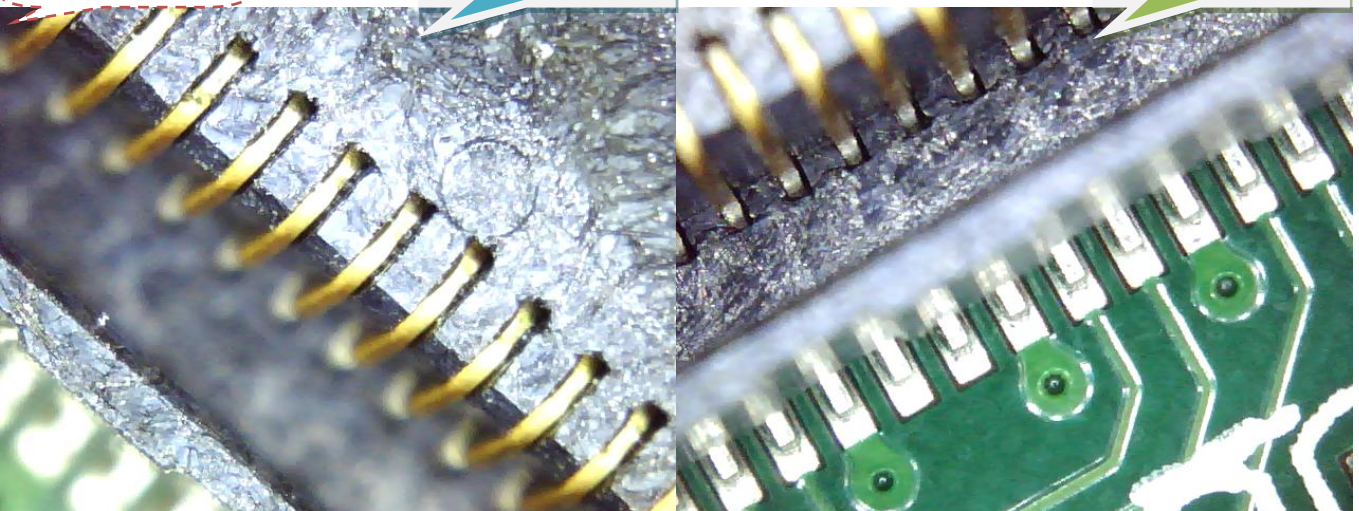
After cleaning



Comparison 9

Before cleaning

After cleaning



5. Conclusion

After this cleaning, using I.C.T-5600 PCBA cleaning machine, DI-250 DI water machine, combined with 4625b water-based environmental protection cleaning solution, under the above process parameters, good cleaning effect has been achieved, and no damage to PCBA components, which can ensure the effectiveness and safety of sample cleaning.

Specification:

Item	I.C.T-5600
Cleaning basket size	L610 x W560 x H100 (mm) x2 layers
Spray tank capacity	17L
Concentrate capacity	32L
Dilution capacity	60L
Clean time	5~20min
Rinse time	1~2min/times
Rinse times	1~99times
Hot air dry time	10~30min
Detergent heat temp	Room temp~60°C
PCB hot air dry temp	Room temp~99°C
Resistivity range	0~18MΩ
Detergent filter	0.22um
Rinse water pipe out filter	0.22um
Air filter	10um
DI water supply	30~65L/Min
DI water pressure	0.2~0.4Mpa
Vent size	Φ76xH50(mm)
Power/Air supply	AC380V/50A/50HZ,30KW,0.5Mpa
Machine size	L1300 x W1200 x H1850(mm)
Machine weight	460KG

Customer:

 An Advanced Energy Company					 Lighting & control of	
					 the pioneer of lighting	
		 Design Procurement Manufacturing				
	 performance solutions				 WORLD CLASS ELECTRONICS	 Concept to silicon
	 INDUSTRIA DEL PLASTICO					

Thanks for choosing I.C.T.
I.C.T looks forward to win-win cooperation.
Thank you.